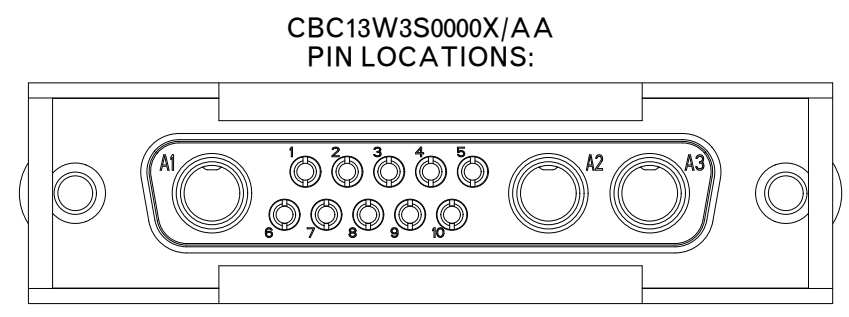
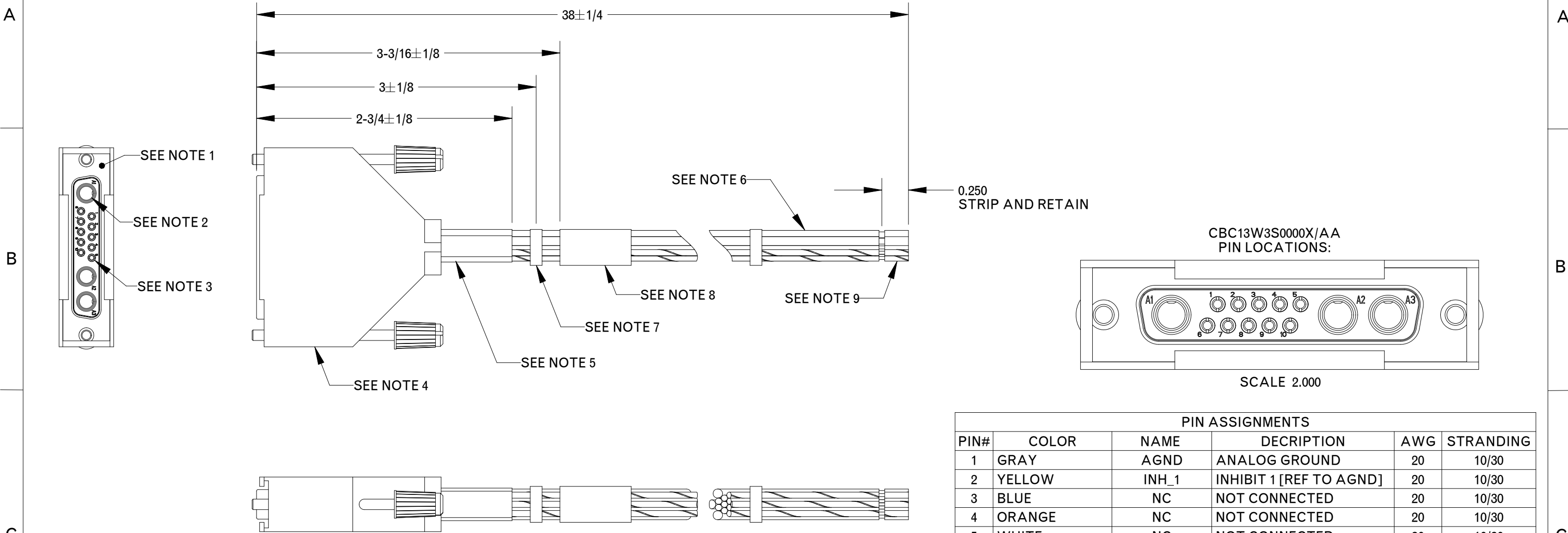


REVISIONS			
REV	DESCRIPTION	DATE	APPROVED
A	INITIAL RELEASE PER ECO 17-22587	06/27/17	DS
B	LENGTH SPEC TO REFERENCE OVERALL ENDS PER ECO 20-27137	12/03/20	K.DUBROWN



PIN ASSIGNMENTS					
PIN#	COLOR	NAME	DESCRIPTION	AWG	STRANDING
1	GRAY	AGND	ANALOG GROUND	20	10/30
2	YELLOW	INH_1	INHIBIT 1 [REF TO AGND]	20	10/30
3	BLUE	NC	NOT CONNECTED	20	10/30
4	ORANGE	NC	NOT CONNECTED	20	10/30
5	WHITE	NC	NOT CONNECTED	20	10/30
6	BROWN	INPUT_GOOD	[REF TO AGND]	20	10/30
7	VIOLET	STANDBY+	[REF TO STANDBY-]	20	10/30
8	WHITE-BLUE	STANDBY-	STANDBY-	20	10/30
9	WHITE-ORANGE	ON/OFF	[REF TO AGND]	20	10/30
10	WHITE-GREEN	VIN-	[SIGNAL CONNECTION]	20	10/30
A1	GREEN	COM IN	CHASSIS	10	105/30
A2	BLACK	VIN-	POWER CONNECTION	10	105/30
A3	RED	VIN+	POWER CONNECTION	10	105/30

- NOTES:
- CONNECTOR: POSITRONIC CBC13W3S0000X/AA
 - CRIMP TERMINAL: POSITRONIC FC4010D/AA (QTY: 3)
 - CRIMP TERMINAL: POSITRONIC FC6020D/AA (QTY: 10)
 - SHELL: FCI 8655MH2501LF OR EQUIVALENT
 - HEAT SHRINK: SPC PN#FPS-048-1050-BLK OR EQUIVALENT, COLOR: BLACK
 - WIRE INSULATION: UL AWM STYLE 1569 - 300V 105° C / CSA TYPE TRSR-64, 105° C
 - CABLE TIE: SPC PN# VUVT-05M-M OR EQUIVALENT, MIN TENSILE STRENGTH 18 LBS. QTY 5 SPACED 6" (PLACEMENT ON DRAWING NOT TO SCALE)
 - LABEL: TEXT HAS TO BE LEGIBLE WITH A MINIMUM OF .1" TALL CHARACTER HEIGHT.
LABEL FORMAT:
SYNQOR
CABLE PN / REV
DATE CODE (YYWW)
 - STRIP-AND-RETAIN WIRE ENDS.
 - ALL PARTS MUST BE ROHS COMPLIANT
 - ALL PARTS MUST BE UL RECOGNIZED AND CSA APPROVED
 - CABLE MANUFACTURER MUST FOLLOW CONNECTOR MANUFACTURER'S CRIMP GUIDELINES
 - ALL PARTS/COMPONENTS MUST BE FREE OF DAMAGE AND CUTS
 - TOLERANCES +/- 1/8" UNLESS SPECIFIED OTHERWISE.

TOLERANCES:
Unless otherwise specified:
All dimensions in inches
.X +/- .025
.XX +/- .010
.XXX +/- .005
Angles +/- 1°

Third Angle Projection

SynQor 155 Swanson Road
Boxborough, MA 01719-1316

MULTIQOR 10AWG INPUT CABLE
MTQ-CBL-INPUT3C

SOURCE: PRO/E 705-1000231

SIZE	DATE	DWG. NO.	REV
B	DEC-03-20	705-1000231	B

THIS DRAWING IS THE PROPERTY OF SYNQOR LLC. It is not to be reproduced or copied, in whole or in part, or used for furnishing information to others, or for any purpose detrimental to the interests of SynQor. The information shown herein may be protected by patents owned or controlled by SynQor.

SCALE: 1.000 DRAWN: KJD CHECK: SHEET 1 of 1